

## A - OFFICIALS' SIGNALS - International Basketball Federation (@2017)

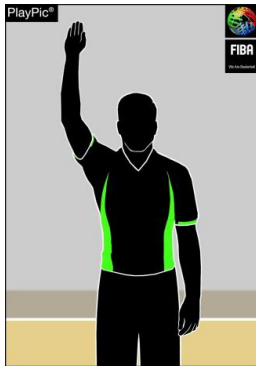
A.1 The hand signals illustrated in these rules are the only official signals.

A.2 While reporting to the scorer's table it is strongly recommended to verbally support the communication (in international games in the English language).

A.3 It is important that the table officials are familiar with these signals.

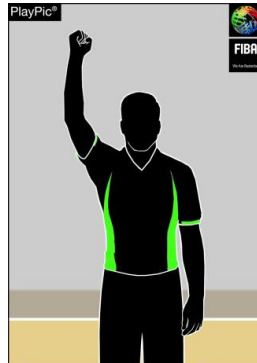
### Game clock signals

#### STOP THE CLOCK



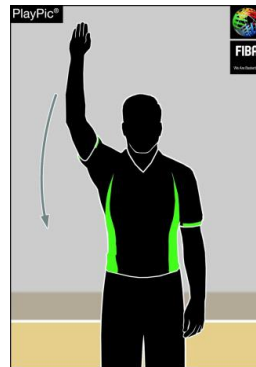
Open palm

#### STOP THE CLOCK FOR FOUL



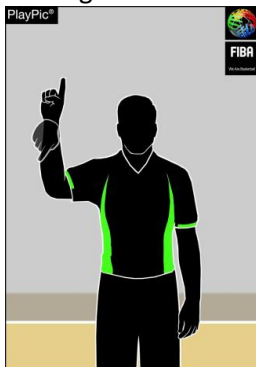
One clenched fist

#### START THE CLOCK



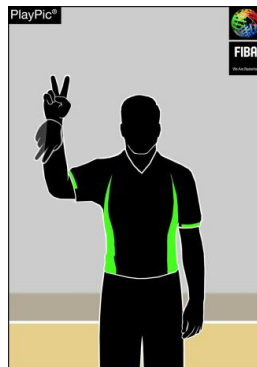
Chop with hand

#### Scoring 1 POINT



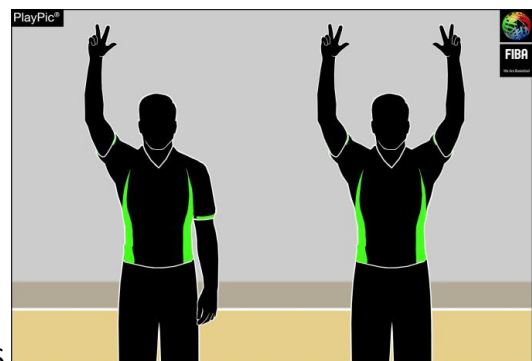
1 finger, 'flag' from wrist

#### 2 POINTS



2 fingers, 'flag' from wrist

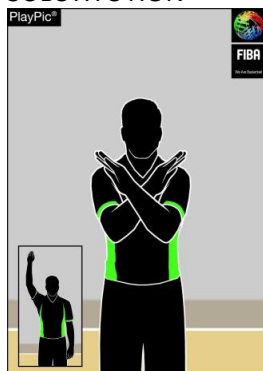
#### 3 POINTS



3 fingers extended  
One arm: Attempt  
Both arms: Successful

## Substitution and Time-out

### SUBSTITUTION



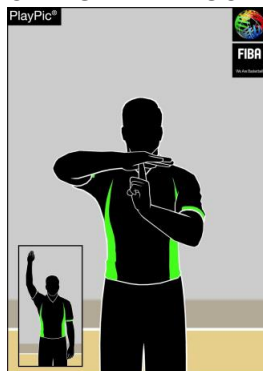
Cross forearms

### BECKONING-IN



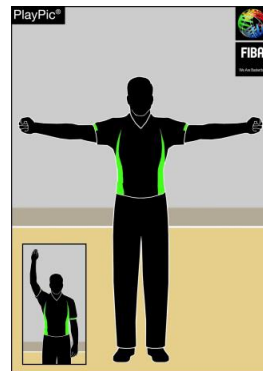
Open palm, wave towards the body

### CHARGED TIME-OUT



Form T, show index finger

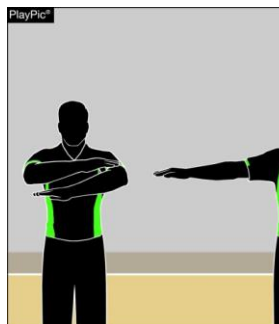
### MEDIA TIME-OUT



Open arms with clenched fists

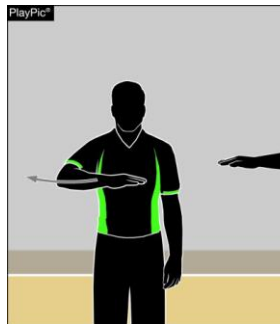
## Informative

### CANCEL SCORE, CANCEL PLAY



Scissor-like action with arms, once across chest

### VISIBLE COUNT

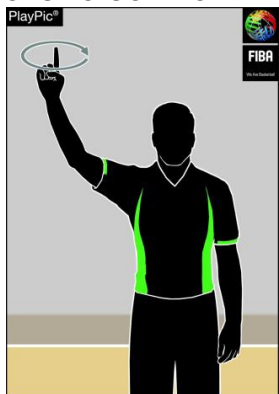


Counting while moving the palm

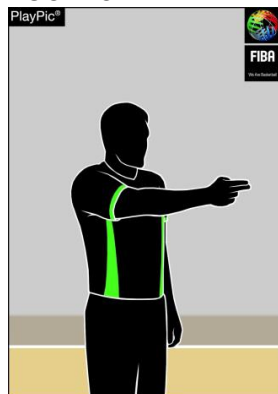
### COMMUNICATION



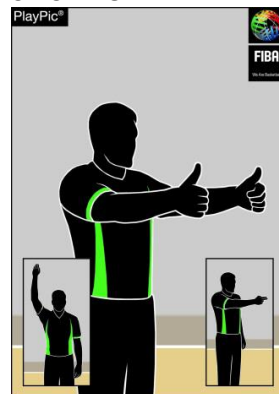
### SHOT CLOCK RESET



### DIRECTION OF PLAY AND/OR OUT-OF-BOUNDS



### HELD BALL/JUMP BALL SITUATION



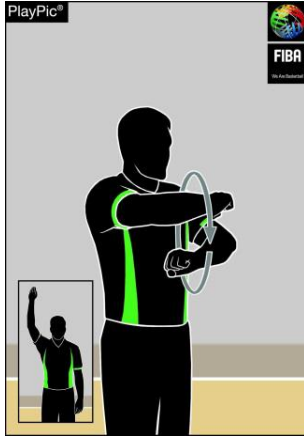
Rotate hand, extend index finger

Point in direction of play, arm parallel to sidelines

Thumbs up, then point in direction of play using the alternating possession arrow

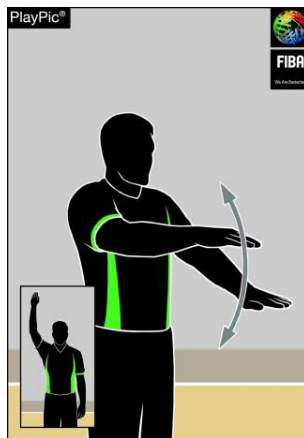
### Violations

#### TRAVELLING



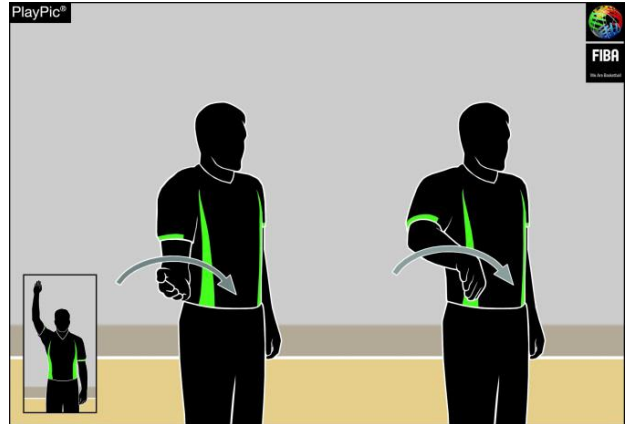
Rotate fists

#### ILLEGAL DRIBBLE: DOUBLE DRIBBLING

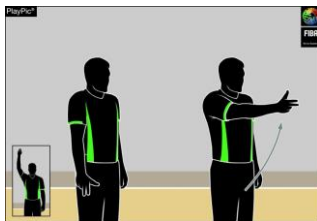


Patting motion with palm

#### ILLEGAL DRIBBLE: CARRYING THE BALL



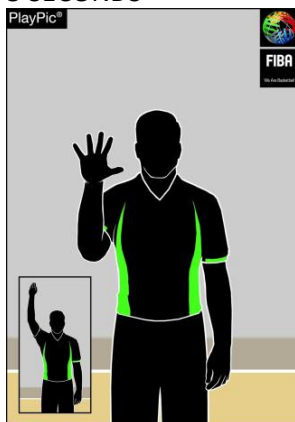
Half rotation with palm



3 SECONDS

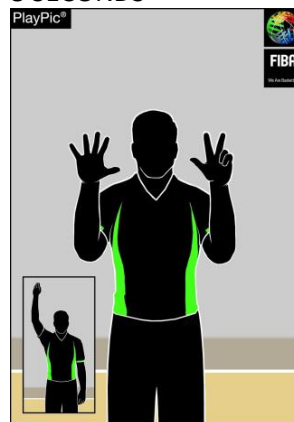
Arm extended, show 3 fingers

#### 5 SECONDS



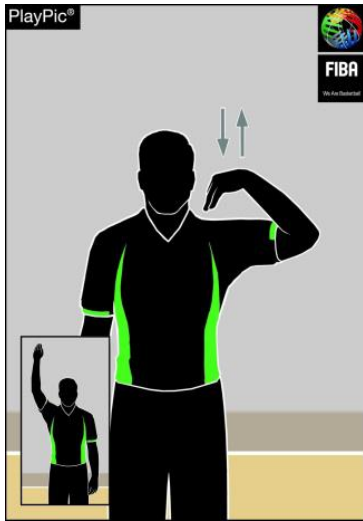
Show 5 fingers

#### 8 SECONDS



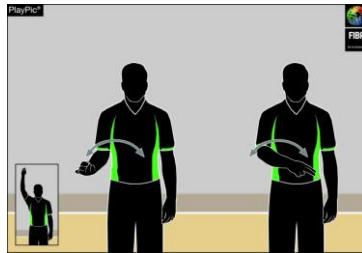
Show 8 fingers

24 SECONDS



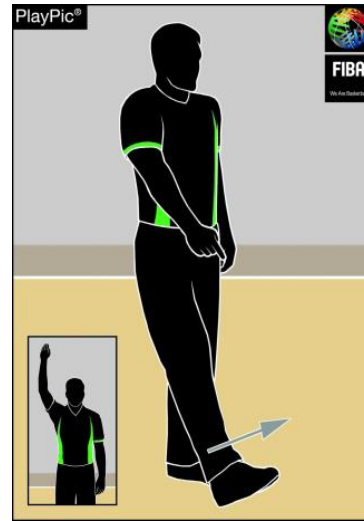
Fingers touch shoulder

BALL RETURNED TO BACKCOURT



Wave arm front of body

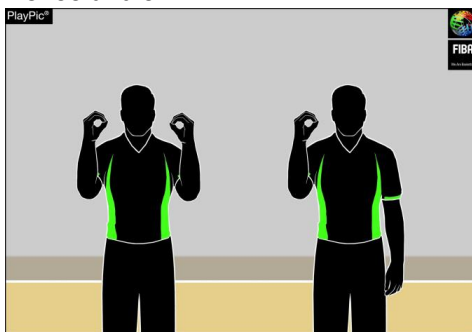
DELIBERATE FOOT BALL



Point to the foot

Number of Players

No. 00 and 0



Both hands show number 0

Right hand shows number 0

No. 1 - 5



Right hand shows number 1 to 5

No. 6 - 10



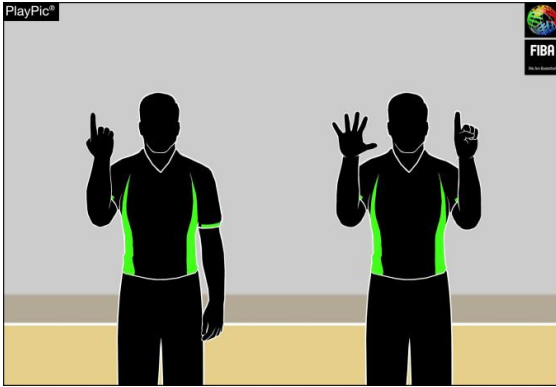
Right hand shows number 5, left hand shows number 1 to 5

No. 11 - 15



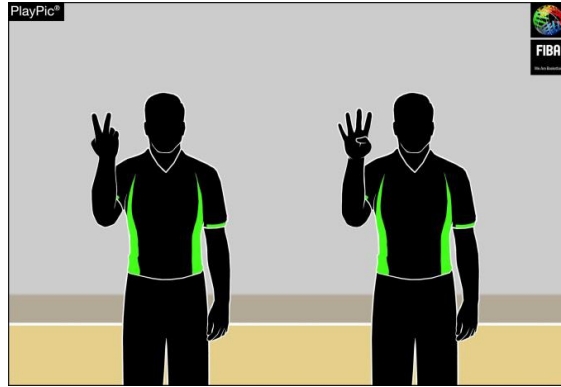
Right hand shows clenched fist, left hand shows number 1 to 5

No. 16



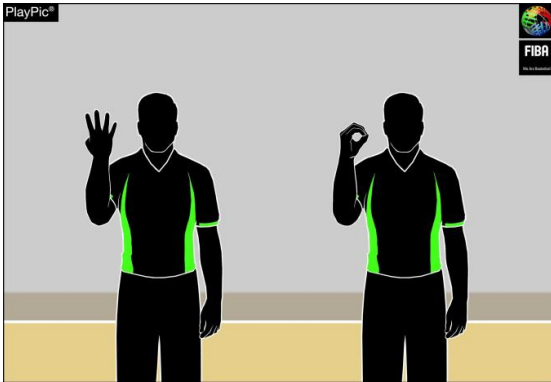
First reverse hand shows number 1 for the decade digit - then open hands show number 6 for the units digit

No. 24



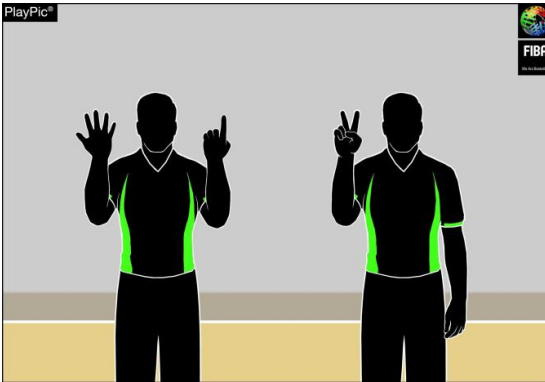
First reverse hand shows number 2 for the decade digit - then open hand shows number 4 for the units digit

No. 40



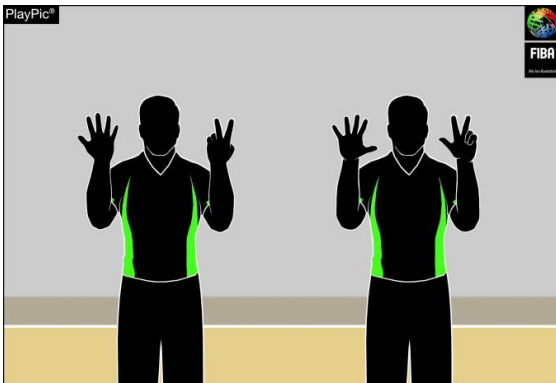
First reverse hand shows number 4 for the decade digit - then open hand shows 0 for the units digit

No. 62



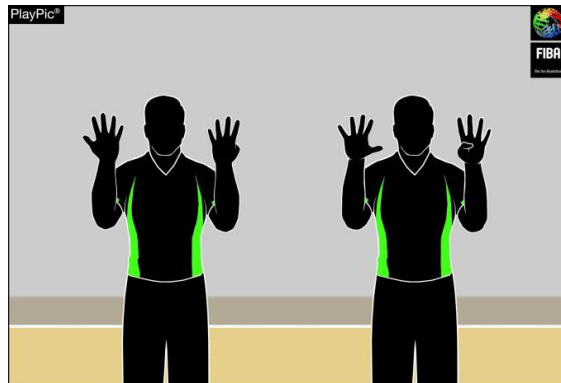
First reverse hands show number 6 for the decade digit - then open hand shows 2 for the units digit

No. 78



First reverse hands show number 7 for the decade digit - then open hands show number 8 for the units digit

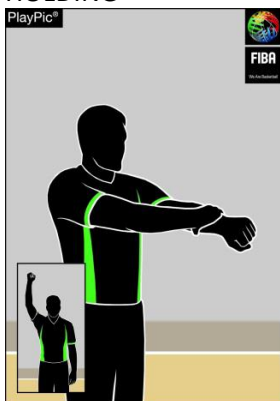
No. 99



First reverse hands show number 9 for the decade digit - then open hands show number 9 for the units digit

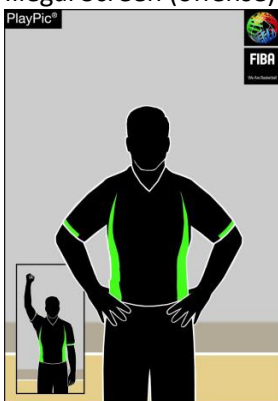
# Type of Fouls

## HOLDING



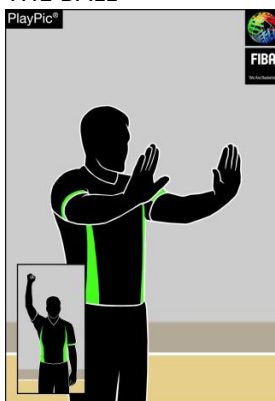
Grasp wrist downward

## Blocking (defense), Illegal Screen (offense)



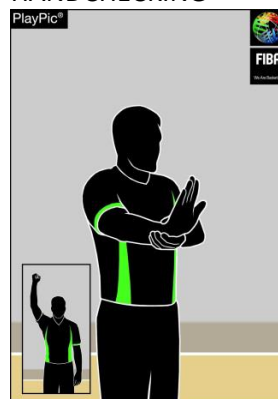
Both hands on hips

## PUSHING OR CHARGING WITHOUT THE BALL



Imitate push

## HANDCHECKING



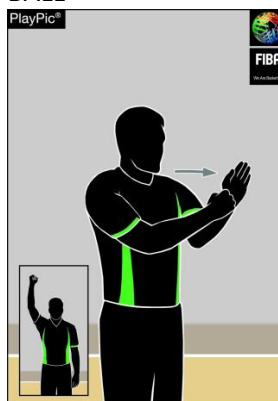
Grab palm and forward motion

## ILLEGAL USE OF HANDS



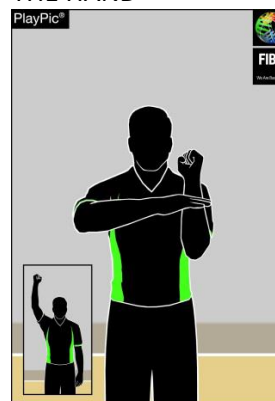
Strike wrist

## CHARGING WITH THE BALL



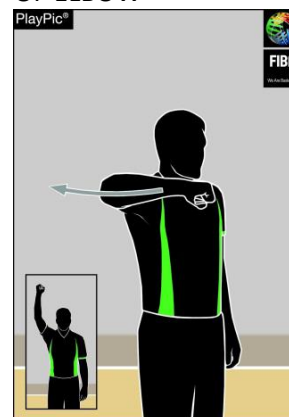
Clenched fist strike open palm

## ILLEGAL CONTACT TO THE HAND



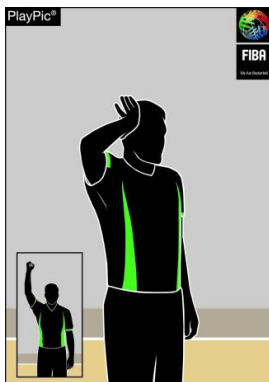
Strike the palm towards the other forearm

## EXCESSIVE SWINGING OF ELBOW



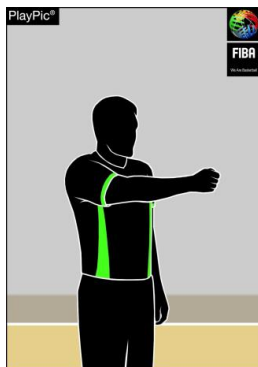
Swing elbow backwards

## HIT TO THE HEAD



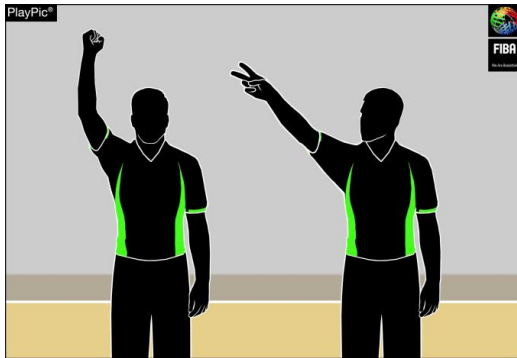
Imitate the contact to the head

## FOUL BY TEAM IN CONTROL OF THE BALL



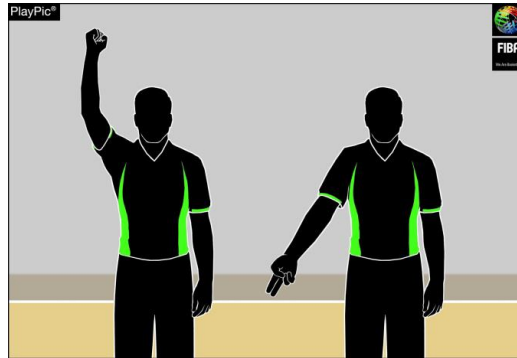
Point clenched fist towards basket of offending team

### FOUL ON THE ACT OF SHOOTING



One arm with clenched fist, followed by indication of the numbers of free throws

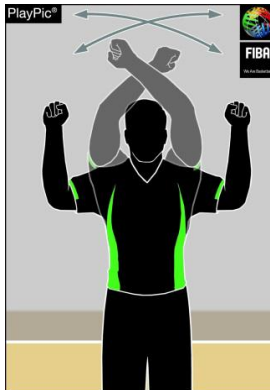
### FOUL NOT ON THE ACT OF SHOOTING



One arm with clenched fist, followed by pointing to the floor

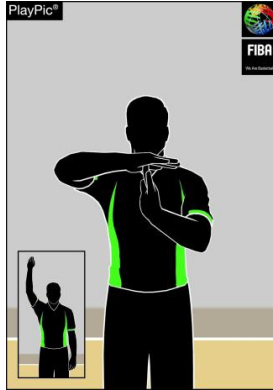
### Special Fouls

#### DOUBLE FOUL



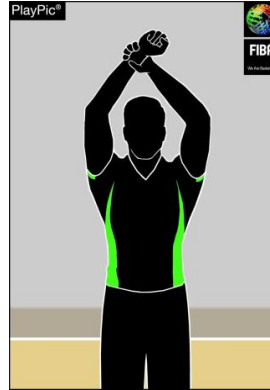
Wave clenched fists on both hands

#### TECHNICAL FOUL



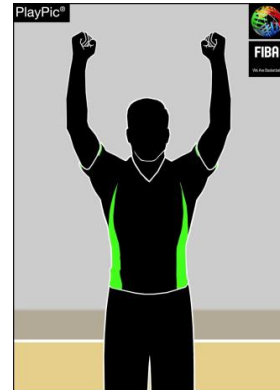
Form T, showing palms

#### UNSPORTSMANLIKE FOUL



Grasp wrist upward

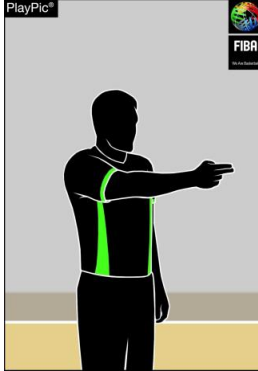
#### DISQUALIFYING FOUL



Clenched fists on both hands

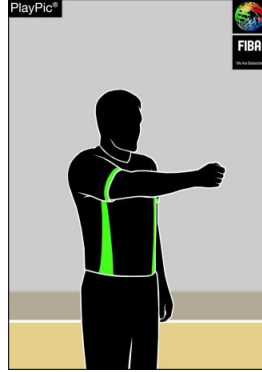
## Foul Penalty Administration Reporting to Table

AFTER FOUL  
WITHOUT FREE  
THROW(S)



Point in direction of  
play, arm parallel to  
sidelines

AFTER FOUL BY  
TEAM IN CONTROL  
OF THE BALL



Clenched fist in  
direction of play, arm  
parallel to sidelines

1 FREE THROW



Hold up 1 finger

2 FREE THROWS



Hold up 2 fingers

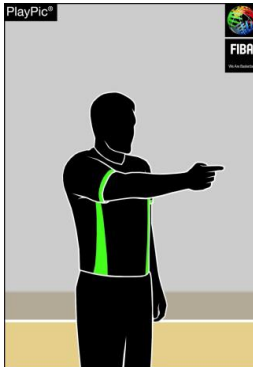
3 FREE THROWS



Hold up 3 fingers

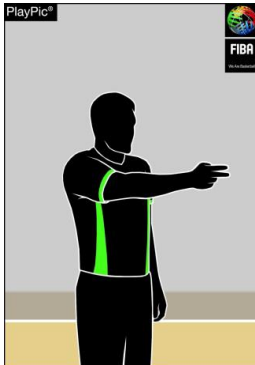
## Adminstrating Free Throws – Active Official (Lead)

1 FREE THROW



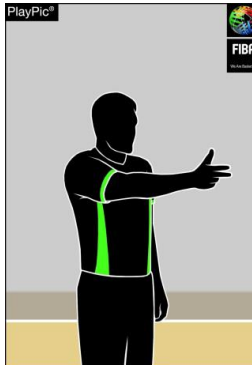
1 finger horizontal

2 FREE THROWS



2 fingers horizontal

3 FREE THROWS

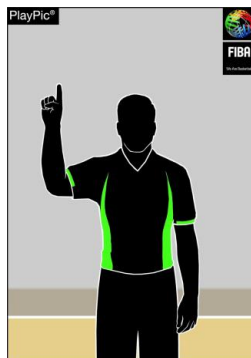


3 fingers horizontal



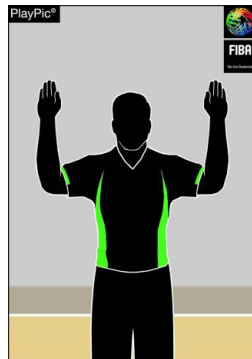
**Administrating  
Free Throws –  
Passive Official  
(Trail & Centre)**

**1 FREE THROW**



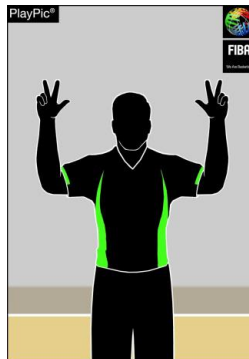
Index finger

**2 FREE THROWS**



Fingers together on  
both hands

**3 FREE THROWS**



3 fingers extended  
on both hands